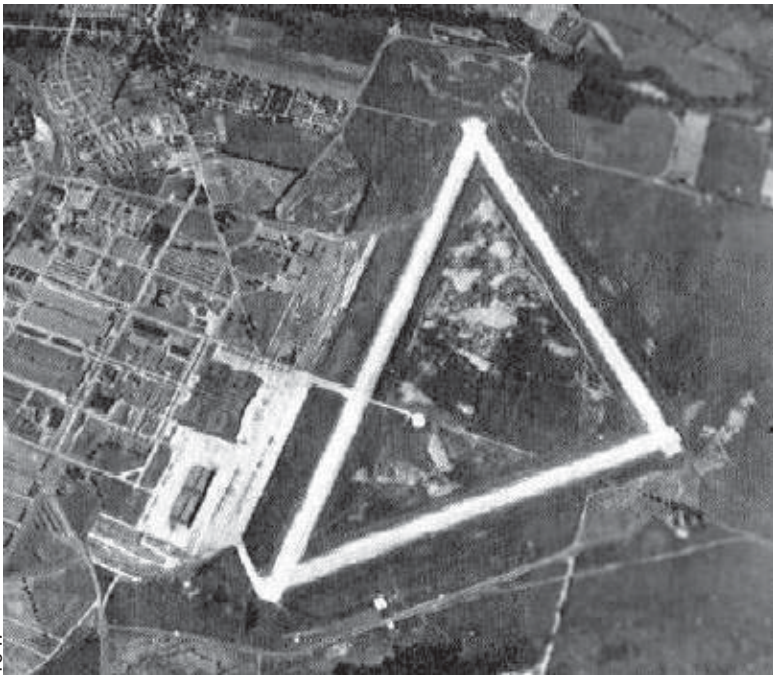




1758: Fort Stanwix, Rome, NY



1947

1941: Griffiss Air Force Base, Rome, NY



2005: BattleVision Situational Awareness

Locating Homeland: Hardening the Civilian Landscape

Introduction and Context

The **Locating Homeland** studio will explore the emerging *homeland* paradigm by examining an iconic feature of the American landscape: the military base, a formation embedded both in locality - with supporting infrastructures of town, suburb and sprawl accreting around it - as well as in global defense networks.

The new round of military base realignments and closures (BRAC) announced May 2005 is being vigorously protested by affected communities. Their crisis response reflects profound links between civilian and military interests, links revealed in hard and soft scapes surrounding military bases. These social, economic, ecological, architectural and symbolic topographies provide case studies in the militarized 'hardening' of domestic environments.

The military base model provides a context for the emergent *homeland* - the national security paradigm being overlaid onto civilian landscapes nationwide following the terrorist attacks of September 11, 2001.

With new technologies fortifying the military arsenal, the *homeland* project's superimposition of militarized structures onto civil space raises questions about the integrity of public and private realms, and the status of civil liberties deployed therein.